

State Testing Report to the Board of Education

POMPTON LAKES PUBLIC SCHOOLS



Presented by
Jayne L. Tanis
Director of Curriculum, Testing, & Instruction
October 1, 2019

Measuring
College and
Career
Readiness

EVERY STUDENT SUCCEEDS ACT (ESSA)

All New Jersey public school districts are required to administer achievement tests developed by the New Jersey Department of Education.

Literacy and Math assessments are used to measure the success of our schools on the standards set by the Federal *Every Student Succeeds Act (ESSA)*. The New Jersey Student Learning Assessment (NJSLA) is an assessment of the New Jersey Student Learning Standards.

For the Spring 2019 NJSLA administration, all New Jersey students in Grades 3 to 10 were tested in Literacy (NJSLA-ELA). Students in Grade 3-8, or students in grade 9-10 Algebra I, II or Geometry classes were assessed in Mathematics (NJSLA-M).



EVERY STUDENT SUCCEEDS ACT (ESSA)

Science assessments are used to measure the success of our schools on the standards set by the Federal *Every Student Succeeds Act (ESSA)*. The New Jersey Student Learning Assessment in Science (NJSLA-S) is an assessment of the New Jersey Next Generation Science Standards (NGSS).

For the Spring 2019 NJSLA-S administration, all New Jersey students in Grades 5, 8 and 11 were tested in Science.

The New Jersey Department of Education has not released the NJSLA-S data yet.



OTHER STATE ASSESSMENTS MANDATED UNDER ESSA

- **The Dynamic Learning Map (DLM) Alternative Assessment System** is administered to students with the most significant cognitive disabilities. It assesses what these students know and can do in DLM assessed subjects (ELA, Math and Science).
- **WIDA ACCESS 2.0** assesses English proficiency in several areas including Listening, Speaking, Reading, and Writing for English Language Learners.

NJSLA PERFORMANCE LEVELS

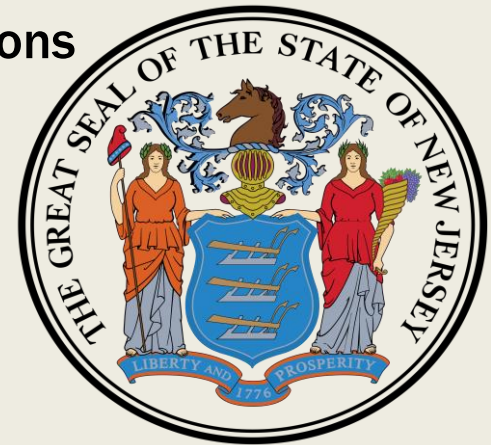
Level 1: Not yet meeting grade level expectations

Level 2: Partially meeting grade level expectations

Level 3: Approaching grade level expectations

Level 4: Meeting grade level expectations

Level 5: Exceeding grade level expectations



****Level 4 and Level 5 is an indication a student is on pace to be college and career ready.**

NJSLA SCORE RANGES

- Scores range from 650-850
- 750 is the score for “Met Expectations”
- The score for “Exceeded Expectations” varies by subject and grade each year and is specified on the Individual Student Report

Grade 3 - 810	Grade 3 - 790
Grade 4 - 790	Grade 4 - 796
Grade 5 - 799	Grade 5 - 790
Grade 6 - 790	Grade 6 - 788
Grade 7 - 785	Grade 7 - 786
Grade 8 - 794	Grade 8 - 801
Grade 9 - 791 Grade 10 - 794 Grade 11 - 792	Alg I - 805 Alg II - 808 Geometry - 783

CHANGES TO THE NJSLA FOR 2019

- Interim changes resulted from the NJDOE's Phase I outreach to stakeholders.



CHANGES IN THE NJSLA-ELA FORMAT SINCE 2018

ELA:

- Item counts (i.e., test questions) were reduced, resulting in fewer units for ELA.
- The number of units for ELA were reduced from three to two, resulting in a reduction of 75 minutes for grade three and 90 minutes for grades four through high school (ELA 10)

CHANGES IN THE NJSLA-MATH FORMAT SINCE 2018

MATH:

- Item counts were reduced, resulting in fewer units, or testing blocks.
- Grades 3-5: the number of units were reduced from four to three, resulting in a reduction of 60 minutes of testing time.

CHANGES IN THE NJSLA-MATH FORMAT SINCE 2018 (CONTINUED)

- **Grades 6-8:** the number of units remained at three, but the time allotted for each 80-minute unit was reduced by 20 minutes per unit for a total reduction of 60 minutes in testing time. Within each unit, the item counts were reduced.
- **The Algebra I end-of-course test** was reduced from three units to two units of 90 minutes each, for a total reduction of 90 minutes of testing time.

Comparison of **Pompton Lakes's** Spring 2019 NJSLA-M Administrations to New Jersey - Percentages for 2019

Grade	Level 1, District	Level 1, State	Level 2, District	Level 2, State	Level 3, District	Level 3, State	Level 4, District	Level 4, State	Level 5, District	Level 5, State
3	2.2	8.0	14.3	13.9	25.3	23	44	41.2	14.3	13.9
4	6.4	8.6	15.2	14.7	20	25.7	51.2	43.3	7.2	7.7
5	1.9	6.4	15.7	20.9	31.5	25.8	38	35.8	13	11
6	6.1	9.6	17.5	22.5	24.6	27.4	47.4	33.1	4.4	7.5
7	5.6	7.6	11.8	21.7	25.7	29.3	47.2	33.8	9.7	8.3
8*	7.1	23.3	25	23.1	39.3	24.3	28.6	28.2	0	1.1
Algebra I	5.8	9.5	10.3	26.3	26.3	21.3	57.1	37.3	.6	5.5
Algebra II	3.6	21.3	8.9	14.3	26.8	18.7	53.6	40.4	7.1	5.3
Geometry	3.5	11.1	21	25.4	40.6	32.3	29.4	26.1	5.6	5.1

***Some students in grade 8 participated in the NJSLA Algebra I assessment in place of the 8th grade Math assessment. Thus, NJSLA Math 8 outcomes are not representative of grade 8 performance as a whole.**

***It is noteworthy to mention that 47.4 % of Algebra I PLHS students earned a score of 4 or 5, whereas the State average was 27%.**

Note: Percentages may not total 100 due to rounding.

MATH HIGHLIGHTS - 2019



■ LMS – Score 4 & 5

- Grade 6 & 7 Math students scored above the State average in meeting and exceeding proficiency
- Grade 8 students scored above the State average in meeting proficiency standards on both the Grade 8 and Alg I exams



■ PLHS – Score 4 & 5

- Algebra I, II, & Geometry students scored above the State average in meeting and/or exceeding proficiency standards

■ Elementary Schools – Score 4 & 5

- Grade 3 & 5 Math students scored above the State average in meeting and exceeding proficiency standards

Comparison of **Pompton Lakes's** Spring 2019 NJSLA-ELA Administrations English Language Arts/Literacy to New Jersey Percentages for 2019

Grade	Level 1, District	Level 1, State	Level 2, District	Level 2, State	Level 3, District	Level 3, State	Level 4, District	Level 4, State	Level 5, District	Level 5, State
3	5.5	14	16.5	14.4	19.8	21.4	50.5	42.8	7.7	7.4
4	5.6	8.6	6.4	12.6	19.2	21.4	51.2	39.1	17.6	18.3
5	2.8	7.4	12	12.5	19.4	22.2	50	45.6	15.7	12.3
6	5.3	7.3	4.4	12.6	14.9	23.9	43	40.9	32.5	15.2
7	4.1	8.9	4.1	10.5	9.7	17.8	30.3	33.1	51.7	29.7
8	4.2	9.2	5.3	10.3	11.6	17.7	37.9	38	41.1	24.9
9	3.9	11.7	4.4	11.9	18.9	21	46.7	36.3	26.1	19
10	6.8	15	5	11.1	17.4	15.9	35.4	33	35.4	25

- Grade 7 & 8 ELA students outperformed the State in Exceeding Proficiency Standards.

Note: Percentages may not total 100 due to rounding.

ELA HIGHLIGHTS - 2019



■ Elementary Schools – Score 4 & 5

- Grade 3 & 5 students scored above the State average in meeting and **exceeding** proficiency standards

■ LMS – Score 4 & 5

- Grade 6 – 8 students scored above the State average in **exceeding** proficiency standards

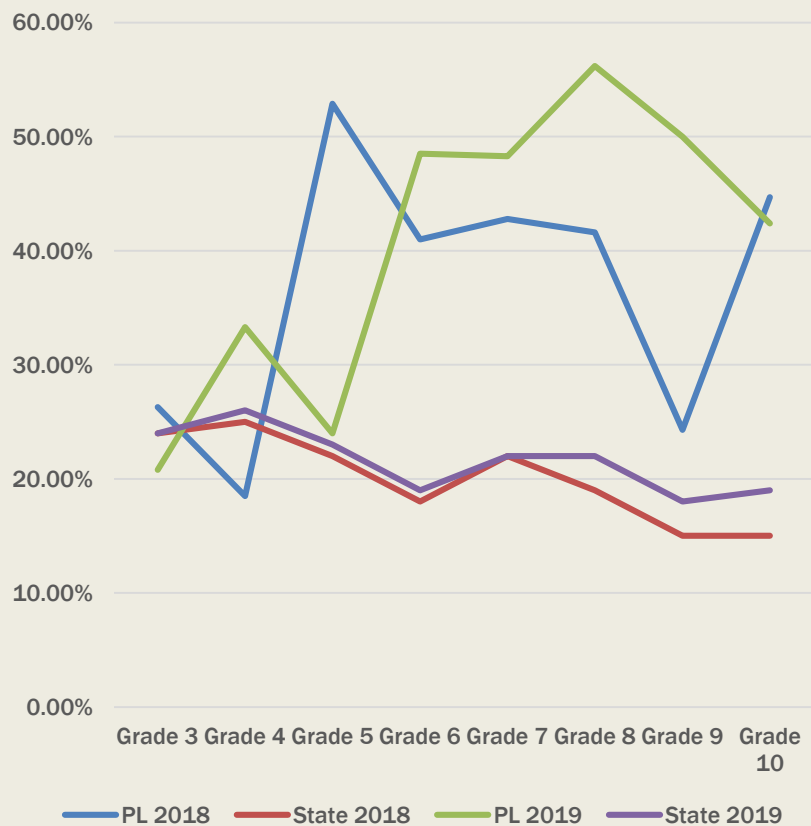
■ PLHS – Score 4 & 5

- Grade 9 & 10 students scored well above the State average in meeting and **exceeding** proficiency standards

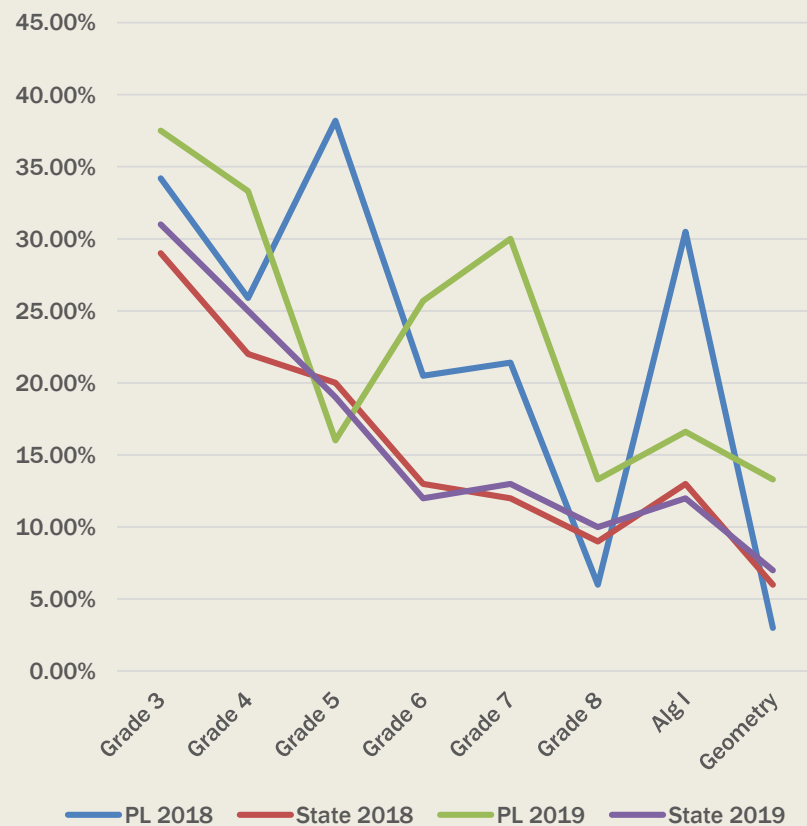


PERFORMANCE OF SPECIAL EDUCATION SUBGROUP – PROFICIENCY LEVEL 4 & 5 FOR ELA & MATH SINCE 2018

ELA - PARCC 2018 - NJSLA 2019

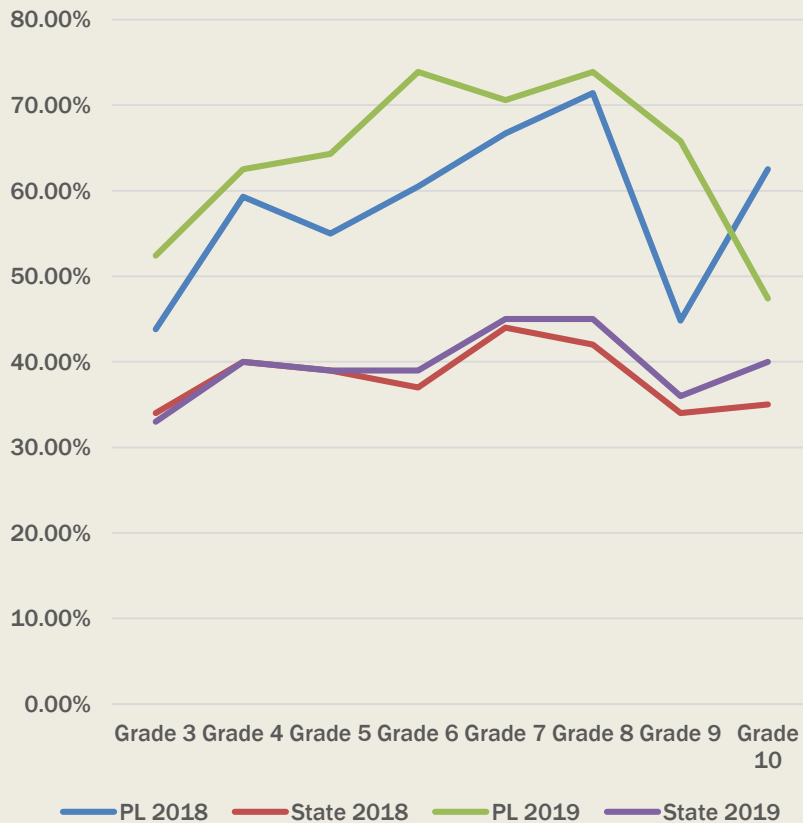


Math - PARCC 2018 - NJSLA

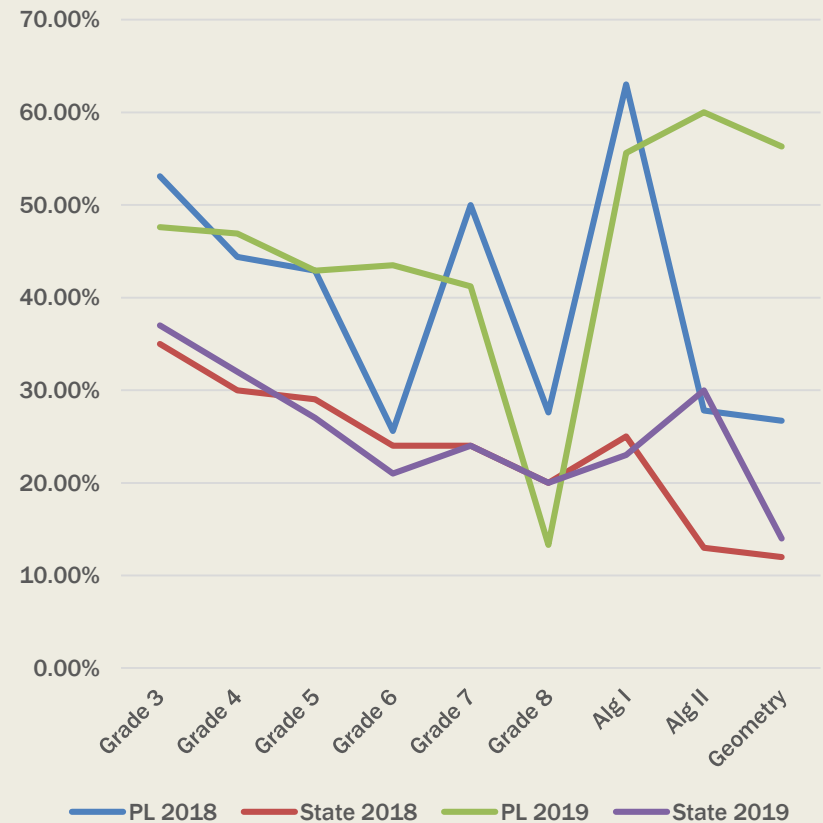


PERFORMANCE OF ECONOMICALLY DISADVANTAGED SUBGROUP – PROFICIENCY LEVEL OF 4 & 5 - SINCE 2018

ELA - PARCC 2018 - NJSLA 2019



Math - PARCC 2018 - NJSLA 2019



DLM RESULTS

- District had 7 students take the DLM in grade 3-8.
- Achievement levels for this assessment ranged from *emerging*, *approaching*, *at*, or *advanced* regarding the respective learning targets referred to as Essential Elements in each subject area.
- Students fell into the ranges of *emerging*, *approaching*, and/or *at* the learning target areas.

ACCESS 2.0 FOR ENGLISH LANGUAGE LEARNERS

- At Pompton Lakes High School, sixteen (16) students were tested in grade 9-12. Five (5) students were at the *ENTERING* proficiency level for their overall score. No students reached exit eligibility.
- At Lakeside Middle School, seven (7) students were assessed. Three (3) students were at or close to the 4.5 overall composite score whereas only one (1) was at the *ENTERING* proficiency level.
- Seventeen (17) students were tested at Lincoln Elementary School. Four (4) students were at or near the 4.5 proficiency level. Four (4) students were at the *ENTERING* proficiency level.
- At Lenox Elementary School, fourteen (14) students were tested. Seven (7) students remain at the *ENTERING* proficiency level. Three (3) students were at or close to the 4.5 overall composite score.

TARGETED INTERVENTIONS

- The Eureka Math program continues to be implemented in the elementary and middle schools.
- The Foundations phonics program will continue in K-1 and be implemented in Grade 2 this year.
- The online Achieve3000 close reading program continues in Grades 6-9.
- New for 2019-2020! iReady, Moby Max and Affirm online assessment programs were implemented for Math and ELA in grades K-8.
- Educational specialists continue to work directly with teachers and students in ELA and Math.

CONTINUED

- Afterschool Title I Learning Centers for math and English language arts, grades 3-8 will begin the week of Nov. 11.
- Afterschool Title III Learning Centers for English Language Learners will begin the week of Oct. 14.
- Courses for students who do not meet proficiency benchmarks on State assessments.
 - At PLHS – Transitional Math courses are offered.
 - At LMS – Basic Skills courses in ELA and Math are offered.

CONTINUED

- Elementary teachers and members of all I & RS in-district teams will receive professional development in New Jersey Tiered System of Supports to help at-risk students improve academic achievement and socioemotional wellness.
- At the elementary level, the co-teaching inclusive instructional model will also be explored as a possible pilot for the 2019-2020 school year.
- District-wide general education teachers will continue to receive professional learning opportunities to improve their lesson implementation for English Language Learners.
- ELLs continue to receive instruction using the High Intensity ESL model approved by the NJDOE.

NEW! PROFESSIONAL LEARNING DAYS

- All district teachers will engage in ongoing, meaningful professional learning directly tied to formative, summative, and/or benchmark data generated from State testing results, classroom assessments, and other optional standardized tests administered in the district such as the TCS InView and PSAT.
- Teachers will be provided with eight (8) professional learning days this year.
- Teachers can use this time to conduct action research, explore, collaborate, and learn new knowledge and strategies to help their students achieve success.

RESOURCES FOR PARENTS/GUARDIANS

- Resources High Intensity ESL

<https://www.nj.gov/education/bilingual/policy/programs/guide.pdf>

- Information on the 2019 NJSLA Student Reports:

<https://nj.mypearsonsupport.com>

- New Jersey Outreach – Assessment Report Summary (Summer 2018)

<https://www.state.nj.us/education/assessment/AssessmentReportSummary.pdf>

- Other State testing information:

<https://www.state.nj.us/education/assessment/>

- State Summary of NJSLA:

<https://www.nj.gov/education/schools/achievement/19/Spring2019.html>