

# POMPTON LAKES

## PRESCHOOL INTEGRATED PROGRAM

Pompton Lakes Public School District is accepting applications for the integrated preschool program for the 2020-2021 school year.

The program offers a language-rich educational curriculum that is aligned with the NJ Department of Education's Preschool Teaching and Learning Expectations as well as Pompton Lakes' district-wide initiatives.

Educational activities are designed to promote skills and abilities in the area of academic, language, social emotional, and motor development in a manner that is both fun and engaging.



"When we include everybody,  
everybody benefits." - CO



### Preschool Integrated Program

- School Year Program for Four (4) Year Olds
- Either enrolled in the Morning (8:35-11:20 am) or Afternoon (12:20 – 3:05 pm) program.
- Five Days per Week
- Held at Lincoln Elementary School
- Pompton Lakes Teacher with Teacher Assistants
- Innovative, Research- Based Curriculum
- Peer Models and Students with Disabilities
- Applications Available on District Web Page
- Limited Number of Seats

### Preschool Integrated Program

Contact:

Ms. Jen Zeoli, Director  
[Jen.zeoli@plps.org](mailto:Jen.zeoli@plps.org)

Department of Special Services  
316 Lakeside Ave, Pompton Lakes

Phone | 973-835-7100 (x1540)  
Fax | 973.835.0655

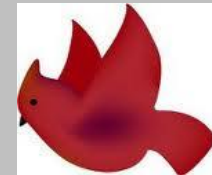
[www.plps-k12.org](http://www.plps-k12.org)

# POMPTON LAKES

## PRESCHOOL INTEGRATED PROGRAM

### PRESCHOOL INTEGRATED PROGRAM PIP

*Peer Models &  
Preschoolers with Disabilities,  
Learning and Growing  
Together*



Having your child participate in the Preschool Integrated Program (PIP) provides them with kindergarten readiness skills in a nurturing environment.

# Why Choose the Preschool Integrated Program (PIP)?

<http://plps-k12.org>



LOCATED AT LINCOLN  
SCHOOL



PROMOTES KINDERGARTEN  
READINESS

STRONG  
CURRICULUM



NURTURING,  
SAFE ENVIRONMENT



Preschool Integration Program (PIP) allows for inclusion to begin at the very start of a child's education. The benefits are great for all students involved.

If you have further questions, please contact Ms. Jen Zeoli, Director of Special Services, at 973-835-7100 (x1540).

## Preschool Integrated Program (PIP)

Pompton Lakes Board of Education is proud to be offering an Integrated Preschool Program for the 2020-2021 school year. This program is open to all Pompton Lakes' children who turn four years old by October 1, 2020 and who are toilet trained.

The program, housed at Lincoln Elementary School, will run two sections. Students can be enrolled in either the morning session which runs from 8:35-11:20 am or an afternoon session which 12:20 – 3:05 pm daily. The program follows the Pompton Lakes Public School yearly calendar.

The class is taught by a dually certified teacher (P-3 and Special Education) and two teaching assistants. This program supports the Pompton Lakes School District's vision to develop programs to help our present and future students. The district recognizes the importance of quality early childhood education programs for its youngest members and the importance of integrating general and special education students. This program, based on proven

## The Preschool Curriculum

The program's curriculum is designed to provide the supports and services needed for our students to be prepared to succeed academically and socially in school. Our Preschool Integrated Program uses the HighScope Curriculum, a research based program aligned with the New Jersey Preschool Teaching and Learning Standards. HighScope emphasizes "active participatory learning." Through this curriculum, students have direct, hands-on experiences with people, objects, events, and ideas. A child's interests and initiatives are at the heart of HighScope.

## Fees & Tuition

Full Year Tuition for the program is \$2,300. A fee of \$200 is due at the time of application. This fee will be returned if a child does not enroll in the program. Monthly payments of \$300 are due the first of September thru March or quarterly payments of \$525 are due on the first of the month in September, November, January and March.