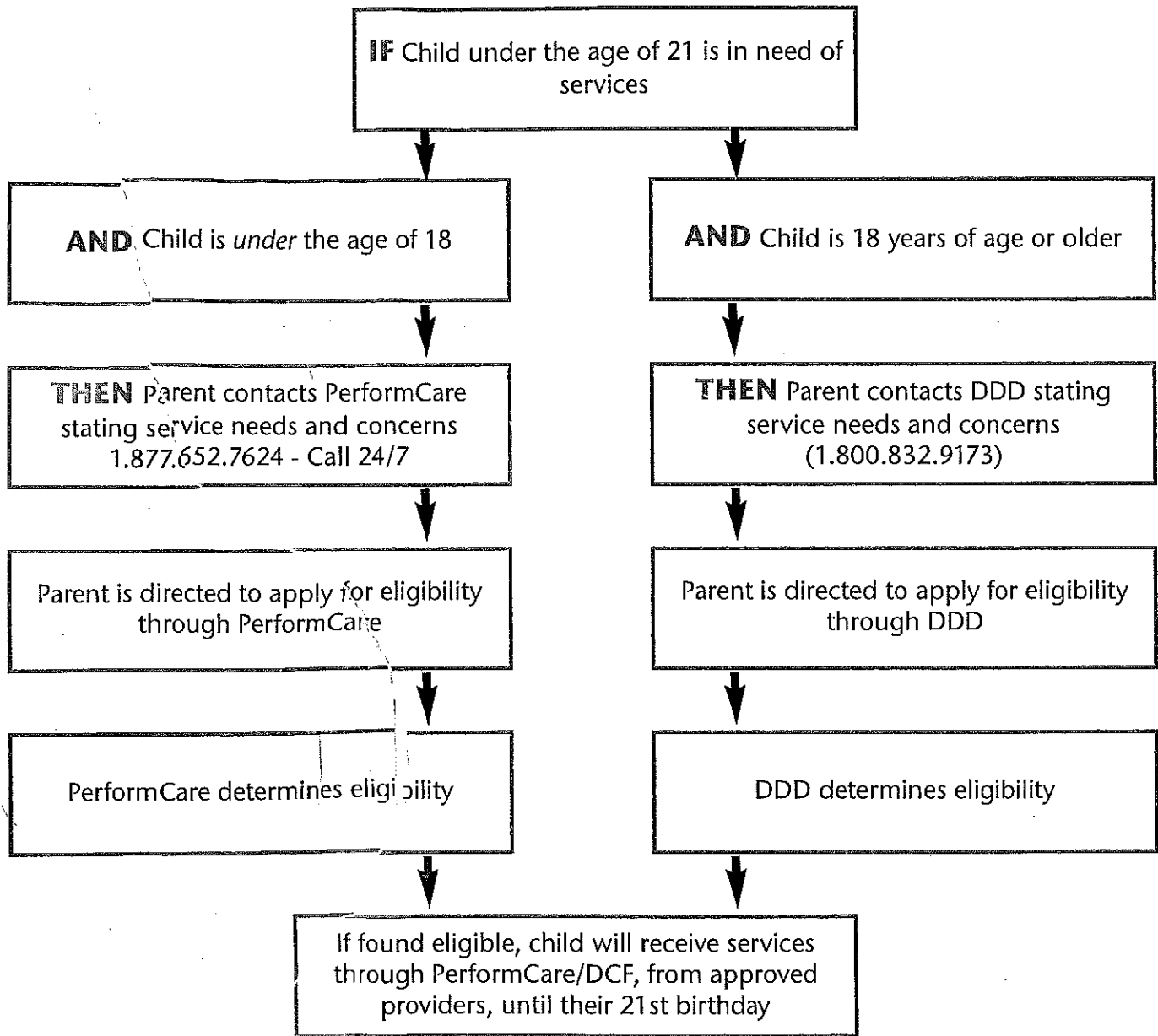


Understanding New Jersey's Service Delivery System Eligibility Process for Children with Intellectual and Developmental Disabilities Under 21



For more information, contact PerformCare 24/7 at 1.877.652.7624 or visit them on the web at <http://www.performcarenj.org/families/disability/index.aspx>



This flowchart was developed by The Arc of New Jersey with information provided by the New Jersey Departments of Human Services and Children and Families (February, 2013)

The Arc of New Jersey
985 Livingston Avenue, North Brunswick, NJ 08902
732.246.2525 | www.arcnj.org

NJ DIVISION OF DEVELOPMENTAL DISABILITIES (DDD) PROGRAMS

- Supports Program Information

<http://www.state.nj.us/humanservices/ddd/programs/supportsprgm.html>

- Fee For Service Implementation

http://www.state.nj.us/humanservices/ddd/programs/ffs_implementation.html

2016 GRADUATES & DDD: Time Line for 2016 Graduates

http://cms02/humanservices/ddd/documents/2016_graduates_aging_out_of_school_system.pdf

SUPPORT COORDINATION

- Support Coordination Information

http://www.state.nj.us/humanservices/ddd/services/support_coordination.html

- Selecting a Support Coordination Agency- A Guide for Families

<http://rwjms.rutgers.edu/boggscenter/projects/infopeopleandfamilies.html>

MEDICAID

- Medicaid Eligibility and DDD

<http://www.state.nj.us/humanservices/ddd/services/medicaideligibility.html>

- Boards of Social Services List of Offices for Medicaid Eligibility Applications
(for Individuals who are not eligible for SSI)

<http://www.nj.gov/humanservices/dfd/programs/njsnap/cwa/>

- Medicaid Information for Individuals not eligible for SSI

<http://www.nj.gov/humanservices/dmahs/clients/medicaid/abd/index.html>

SOCIAL SECURITY & SSI

- How to Apply for SSI

<http://www.ssa.gov/disabilityssi/ssi.html#a0=0>

- Bergen County Social Security Office

<https://secure.ssa.gov/ICON/ic001.do#officeResults>

EMPLOYMENT

- NJ Division of Vocational Rehabilitation Services

<http://jobs4jersey.com/jobs4jersey/jobseekers/disable/index.html>

GENERAL RESOURCES

- The Arc's Family Institute

http://www.thearcfamilyinstitute.org/who_we_are/

- The CAPE Resource Center

<http://bcss.bergen.org/index.php/cape-center-home>

- Planning for Adult Life

<http://planningforadulthoodlife.org/>